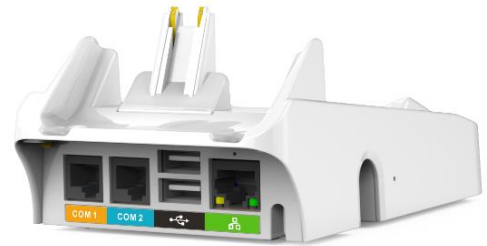
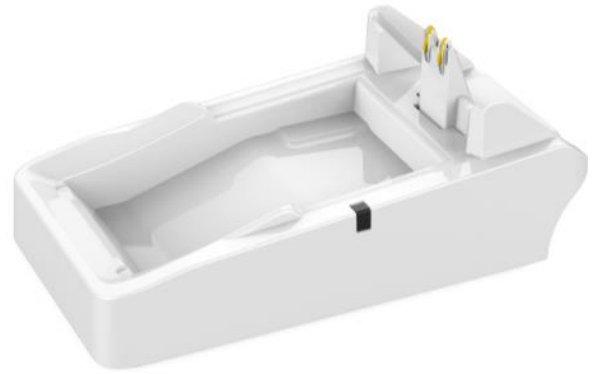


Charger & Communication Hub for xCL_AT-100/150 XC-60

A charging with wireless connection to
peripheral devices for the xCL_AT-100/150.

#hypermarket #grocerystore #chainstore
#foodcourt #restaurant



SPECIFICATIONS

CPU

- Cortex M4

Operating System

- Embedded Linux

Memory

- 32MB Flash
- 128 MB RAM

Charger Contact

- Charging contact for xCL_AT-100/150

Wireless Communication

- WIFI 802.11 b/g/n
- Soft Access Mode & Bridge Mode

Configurations

1. Stand Only
2. Charger Stand
3. Charger Stand + Ethernet + USB host x 2 + RS232 x 2
4. Charger Stand + Ethernet + USB host x 1 + RS232 x 2 + Modem

LED

- Dual colors LED for different device status

Dimension

- 167.7 (L) x 91.1 (W) x 66.6 (H) mm

Power Requirement

- 12V/3A DC switching power supply

Environmental

- Operating temperature: 0°C to 50°C
- Storage temperature: - 20°C to 60°C
- Operating humidity: 5% to 95% (non-condensing)

Accessory

- 12V / 3A Power Adapter and cord
- Quick user guide/safety instruction